



ATTENTION!

Prices valid from:
01.01.2023 to
30.06.2023



SWEET IMAGE **2023**

i.p.a. cosmetics |
sweets

The background is a solid yellow color. It features several large, overlapping, semi-transparent circular shapes in various shades of yellow, creating a layered, abstract effect. One large circle is in the top left, and another is in the bottom right. A smaller circle is in the bottom left, partially overlapping the text.

SWEET IMAGE **2023**

NEWS 2023

REFILL PACK FOR SPICE MILL MINI

Page 9



STARTER-SET: SPICE MILL MINI + REFILL PACK IN ORGANZA BAG

Page 12



SPICE NOTES

Page 25



„BRAIN FUEL“ CANISTER BOTTLE WITH DEXTROSE ROLLS

Page 31



„SWEET MILL“ MINI

Page 7



WOODEN DISPLAY FOR SPICE MILLS MINI IN SLIPCASE

Page 11



CONTENTS

NEW: SWEET AND SALTY TOPPINGS

in „Sweet Mills“ MINI 6/7

FRUIT GUM

Goodie Bag XS 13

Special design & seasonal promotion bags 38

Customized fruit gum 39

Vegan customized fruit gum 39

SPICES

Spice Mills MINI 8

NEW: Refill Pack for Spice Mill MINI 9

Wooden box for Spice Mills MINI 10

NEW: Wooden Display for Spice Mills MINI
in Slipcase 11

NEW: STARTER-SET: Spice Mill Mini +
Refill Pack in Organza bag 12

Test tubes, Filling C 18

Duo Cushion rePET for Tower/Test tubes 20

Spice Tower 24

NEW: Spice Notes 25

POPCORN

Popcorn-Box 35

Popcorn to go 35

MINTS, DEXTROSE & BITTER LIQUORICE

Test tubes 16

Duo Cushion rePET for Tower/Test tubes 20

Candy Tower 22

Sweet Cube 26

Sweet Cushion 28

Sweet Cushion rePET 28

Dextrose rolls MINT 30

Dextrose rolls FRUIT 30

NEW: „Brain Fuel“ Canister bottle
with Dextrose rolls 31

Energy Bag 34

CHOCOLATE LENTILS

Test tubes 16/17

Duo Cushion rePET for Tower/Test tubes 20

Candy Tower 22/23

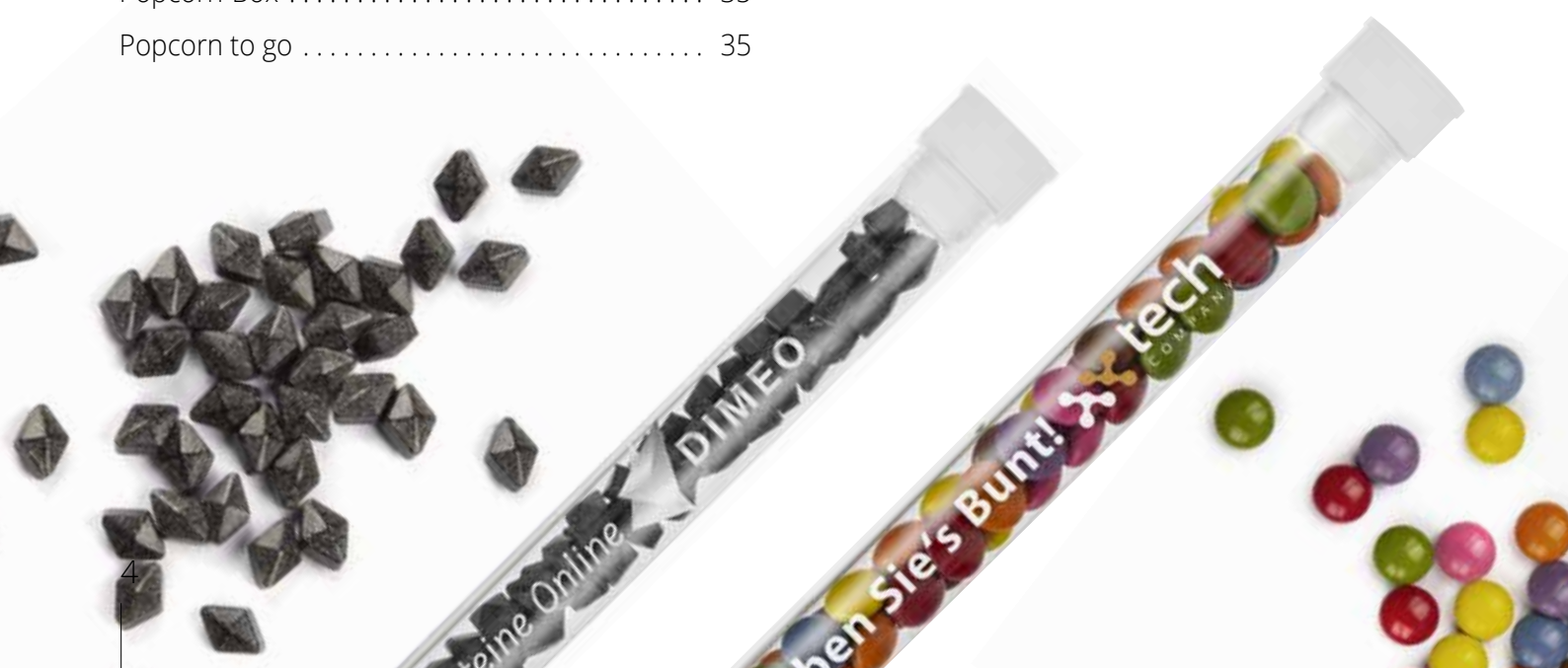
Sweet Cube 26/27

Sweet Cushion 28/29

Sweet Cushion rePET 28/29

Chocolate Blister in Slipcase 37

Chocolate Blister in Cover Card 37





EVENT PRODUCTS (& SPORT)

| | |
|--|-------|
| Sweet Cube | 26/27 |
| Dextrose rolls MINT | 30 |
| Dextrose rolls FRUIT | 30 |
| „My beer“ – 4 bottle carrier | 32 |
| „My Beer“ – Nordic Pilsner beer | 33 |
| Energy Bag | 34 |
| Sweet Goal Box | 34 |
| Popcorn-Box | 35 |
| Popcorn to go | 35 |
| Chocolate Blister in Slipcase | 37 |
| Chocolate Blister in Cover Card | 37 |
| Special design & seasonal promotion bags | 38 |

SEASONAL PRODUCTS

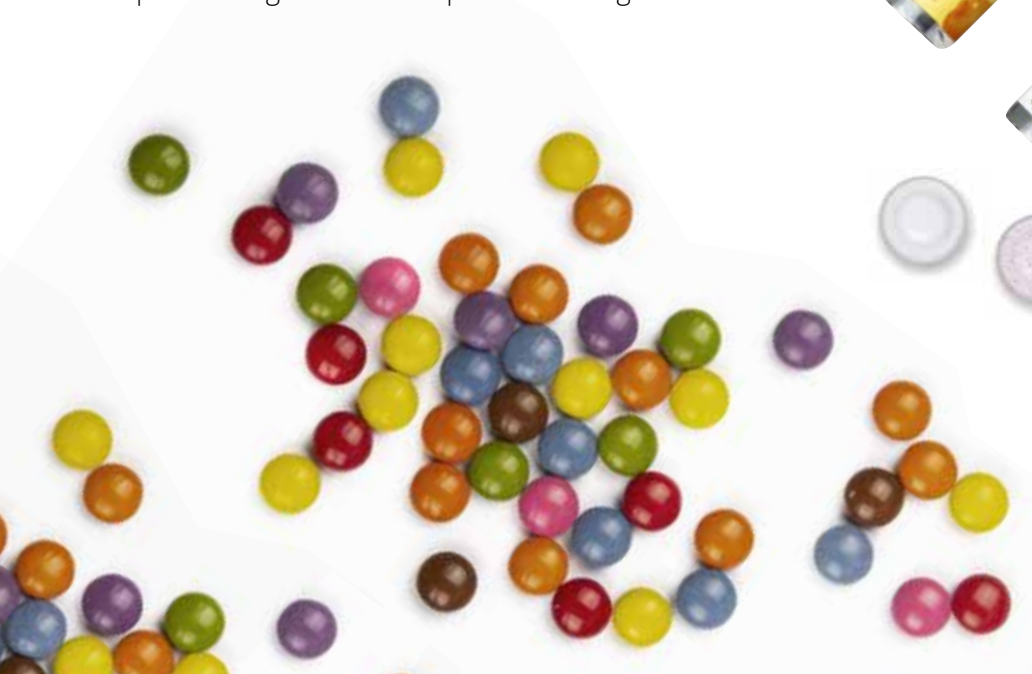
| | |
|--|----|
| Wooden box with Spice Mills MINI | 10 |
| NEW: Wooden Display for Spice Mills MINI in Slipcase | 11 |
| NEW: STARTER-SET: Spice Mill Mini + Refill Pack in Organza bag | 12 |
| Goodie Bag XS | 13 |
| Cover Card Special | 21 |
| Nougat Coins | 36 |
| Special design & seasonal promotion bags | 38 |

TEST TUBES

| | |
|--|----|
| Wooden Display for Test tubes | 15 |
| Test tubes, Filling A | 16 |
| Test tubes, Filling B | 17 |
| Test tubes, Filling C | 18 |
| Cover Card | 19 |
| Duo Cushion rePET for Test tubes | 20 |
| Cover Card Special | 21 |
| Service Card | 21 |

INFO

| | |
|---|-------|
| Info on the subject of „Sustainability“ | 14 |
| Packaging ideas | 40/41 |
| Notes on print | 42 |
| Shelf life | 43 |







NEW!

*You have
to try it!*

„Sweet Mill“ MINI

Handy spice mill made of glass with adjustable grinding mechanism for coarse and fine grinding of the sweet fillings.

| | | | | | |
|--------------------------|--|--|--|--|--|
| Capacity: | approx. 30 g of sweet spices, depending on type of content (See images for contents) | | | | |
| Shelf life: | approx. 12 – 24 months if stored properly | | | | |
| Product size: | 100 mm x 28 mm (h x Ø), volume 25 ml | | | | |
| Type of printing: | Digital printing (CMYK) | | | | |
| Print area: | Ask for our print template | | | | |
| Packaging unit: | 50 pcs./carton, 250 pcs. in the shipping box | | | | |
| Delivery time: | approx. 10 – 15 working days after approval of the artwork | | | | |

| Pieces | 100 | 250 | 500 | 1.000 | 3.000 |
|----------------|------|------|------|-------|-------|
| incl. 4c-label | 3,80 | 3,35 | 3,14 | 2,83 | 2,68 |

Preprint costs included!

i Sweet or sweet-salty mixtures as topping for curd, yoghurt, fruits, ice cream, Cappuccino or Latte Macchiato – in our handy „Mini-Mills“ – simply delicious!



„Cappuccino
Dream“
with cocoa nibs
and coffee beans



„Ice Cream Miracle“
with salted caramel and
cinnamon blossoms



„Sweet Snack“
with brown candy,
rock salt and
rose petals

i Organic herbs combined with pure natural salt!

100%
recyclable!



Barbecue salt



Barbecue seasoning



Chili salt



Kerala Pepper



Seasoned salt



Garlic salt



Salt & Pepper



Gourmet salt



Christmas spice



Snack spice

All-around Tasty

Spice Mill MINI

Handy spice mill made of glass with adjustable grinding mechanism for coarse and fine grinding. Possible contents on left side.

Organic herbs and rock salt (natural salt).

Capacity: up to approx. 30 g depending on content.
Possible choices see table on the left.

Shelf life: 3 years for mixtures containing salt /
2 years for pure spices

Product size: 100 mm x 28 mm (H x Ø), volume 25 ml

Type of printing: Digital printing (CMYK)

Print area: Ask for our print template

Packaging unit: 250 pcs/carton

Delivery time: approx. 10 – 15 working days after approval of the artwork

| Pieces | 100 | 250 | 500 | 1.000 | 3.000 |
|----------------|------|------|------|-------|-------|
| incl. 4c-label | 3,55 | 3,10 | 2,89 | 2,58 | 2,43 |

Preprint costs included!

NEW!

100%
recyclable!

*Your food will
look forward to it!*

Refill Pack for Spice Mill MINI

Block bottom bag made of brown/greaseproof paper, incl. 4c-label.
Also available with our new sweet fillings on request.

| | | | | | |
|--------------------------|--|--|--|--|--|
| Capacity: | approx. 50 g of spices, depending on type of content (see page 8 for contents) | | | | |
| Shelf life: | approx. 24 – 36 months if stored properly | | | | |
| Product size: | approx. 140 x 55 x 35 mm (h x w x d) | | | | |
| Type of printing: | Digital printing (CMYK) | | | | |
| Print area: | Ask for our print template | | | | |
| Packaging unit: | 18 pcs./carton, 180 pcs. in the shipping box | | | | |
| Delivery time: | approx. 10 – 15 working days after approval of the artwork | | | | |

| Pieces | 72 | 144 | 288 | 504 | 1.008 |
|----------------|------|------|------|------|-------|
| incl. 4c-label | 4,90 | 4,80 | 4,70 | 4,60 | 4,40 |

Preprint costs included!





Branding possible

Wooden box for Spice Mills MINI

Spice Mills MINI as a set of 2 or 3 in beautiful wooden box, ideal as a sustainable gift! The set contains 2 or 3 Spice Mills MINI, made of glass, with contents of your choice (see page 8), incl. 4c-label on the mills.

| | |
|------------------------------|--|
| Product: | wooden box incl. 2 or 3 Spice Mills MINI (see page 8) |
| Shelf life: | see Spice Mills MINI (see page 8) |
| Box size: | 100 x 115 x 38 mm (h x w x d) |
| Finishing of the box: | Branding |
| Branding area: | Ask for our print template |
| Packaging unit: | 50 pcs./carton |
| Delivery time: | approx. 15 – 20 working days after approval of the artwork |

| Pieces | 40 | 120 | 240 | 480 | 1.000 |
|-----------------------|-------|-------|-------|-------|-------|
| Set of 2 | 13,95 | 13,35 | 12,85 | 12,15 | 11,40 |
| Set of 3 | 17,50 | 16,45 | 15,74 | 14,73 | 13,98 |
| Branding on box/piece | 2,40 | 1,60 | 0,96 | 0,80 | 0,64 |

Tool costs for Branding 199,00 per motif

Preprint costs of MINI MILLS included!

*Precious,
beautiful,
sustainable!*





Wooden Display for Spice Mills MINI in Slipcase

Noble display made of oiled beech wood for 2 Spice Mills MINI, an advertising-effective eye-catcher in every kitchen. Also available with our new sweet fillings on request. **NEW:** Set in a cardboard slipcase (natural brown-blank) with viewing window in a sustainable packaging.

| | | | | | |
|-------------------------------------|---|--|--|--|--|
| Capacity: | 2 Spice Mills MINI (see page 8) incl. 4c-label | | | | |
| Product size incl. Slipcase: | approx. 125 x 100 x 40 mm (h x w x d) | | | | |
| Product size Wooden Display: | approx. 40 x 100 x 40 mm (h x w x d) | | | | |
| Finishing Wooden Display: | Engraving | | | | |
| Engraving area: | Ask for our print template | | | | |
| Packaging unit: | 15 pcs./carton, 90 pcs. in the shipping box | | | | |
| Delivery time: | approx. 15 – 20 working days after approval of the artwork | | | | |

| Pieces | 30 | 90 | 270 | 450 | 900 |
|--|-------|-------|-------|-------|-------|
| NEW: Set incl. slipcase | 14,95 | 14,05 | 13,85 | 13,35 | 12,95 |
| Engraving on wooden display/piece | 1,43 | 1,39 | 1,32 | 1,28 | 1,21 |
| Tool costs for Engraving 75,00 per motif | | | | | |

Preprint costs of MINI MILLS included!

*Twice
the spice!*

i **NEW:** The environmentally friendly outer packaging for the Spice Mill MINI-Set in a noble wooden display!



NEW!

An elegant present!

i A noble gift with a long-lasting effect! In combination with the environmentally friendly Refill Pack the popular Spice Mill Mini lasts for much longer a tasteful advertising medium in your client's household. Sustainable and delicious!



STARTER-SET: Spice Mill MINI + Refill Pack in Organza bag

The set contains 1 Spice Mill MINI and 1 Refill Pack made-up in Organza bag. Spice Mill Mini (see page 8), Refill Pack (see page 9). Also available with our new sweet fillings on request.

| | | | | | |
|--------------------------|--|--|--|--|--|
| Capacity: | 1 Spice Mill + 1 Refill Pack | | | | |
| Product size: | approx. 200 x 90 x 35 mm (h x w x d) | | | | |
| Shelf life: | approx. 24 – 36 months if stored properly | | | | |
| Type of printing: | Digital printing (CMYK) | | | | |
| Print area: | Ask for our print template | | | | |
| Packaging unit: | 12 pcs./carton, 72 pcs. in the shipping box | | | | |
| Delivery time: | approx. 10 – 15 working days after approval of the artwork | | | | |

| Pieces | 48 | 144 | 288 | 504 | 1.008 |
|----------------|------|------|------|------|-------|
| incl. 4c-label | 9,65 | 9,35 | 8,80 | 8,49 | 7,98 |

Preprint costs included!



Goodie Bag XS

Block bottom bag made of brown/greaseproof paper, incl. 4c-label.

| | |
|--------------------------|--|
| Capacity: | approx. 75 g |
| Shelf life: | approx. 6 – 12 months if stored properly |
| Product size: | approx. 140 x 55 x 35 mm (h x w x d) |
| Label: | incl. 4-coloured print |
| Label size: | 80 x 40 mm or Ø = 40 mm or oval: 49 x 32 mm |
| Type of printing: | Digital printing (CMYK) |
| Print area: | Ask for our print template |
| Packaging unit: | 18 pcs./carton, 180 pcs. in the shipping box |
| Delivery time: | approx. 10 – 15 working days after approval of the artwork |

| Pieces | 72 | 144 | 288 | 504 | 1.008 |
|------------------------------------|------|------|------|------|-------|
| NEW: Eucalyptus gums | 2,70 | 2,57 | 2,53 | 2,47 | 2,43 |
| NEW: Chocolate Mint Dragees | 2,99 | 2,94 | 2,89 | 2,84 | 2,79 |
| Chocolate easter eggs | 2,78 | 2,69 | 2,60 | 2,55 | 2,50 |
| Mini chocolate spiced nuts | 2,68 | 2,55 | 2,51 | 2,45 | 2,41 |
| NEW: Rasp- and Blackberries | 2,64 | 2,51 | 2,46 | 2,41 | 2,37 |
| Sour gummi bears | 2,71 | 2,63 | 2,57 | 2,49 | 2,42 |
| Cherry Cola | 2,71 | 2,63 | 2,57 | 2,49 | 2,42 |

Preprint costs included!



Chocolate Mint Dragees



Eucalyptus gums



Mini chocolate spiced nuts



Chocolate easter eggs



Rasp- and Blackberries



Cherry Cola



Sour gummi bears



Info on the subject of **SUSTAINABILITY**

1 Packaging/Displays made of cardboard or wood

Our cardboard and wooden products **are made from renewable raw materials** and are **100% recyclable**.

2 Plastic Packaging

Our plastic packaging like the test tubes, towers, easy boxes and promotional bags are all **100% recyclable**.

3 Sweet Cushions rePET

Our Duo Cushions rePET and our Sweets Cushions rePET are produced from **100% PCR** (Post Consumer Recycled plastic) **protecting the environment** through the recycling of bottles and other plastic waste.

4 Goodie Bag XS & refill packs made of paper

Our „Goodie Bags XS“ and refill packs are made of brown natron paper with an inlay of greaseproof paper and are **free of plastics or coatings**. These bags are made of natural materials and thus **100% recyclable**.

5 Spice Mills MINI and „Sweet Mills“ MINI made of glass

Our Spice Mills MINI and our „Sweet Mills“ MINI are **refillable** and therefore have a long-lasting use value. And glass is **100 % recyclable**.

6 Colours of the Chocolate lentils

In the coating process the colours of the Chocolate lentils are made with a **base of rice starch** = no use of Titanium dioxide (E 171)!



*Naturally
beautiful not just
in your kitchen!*

100%
recyclable!



Wooden display for test tubes

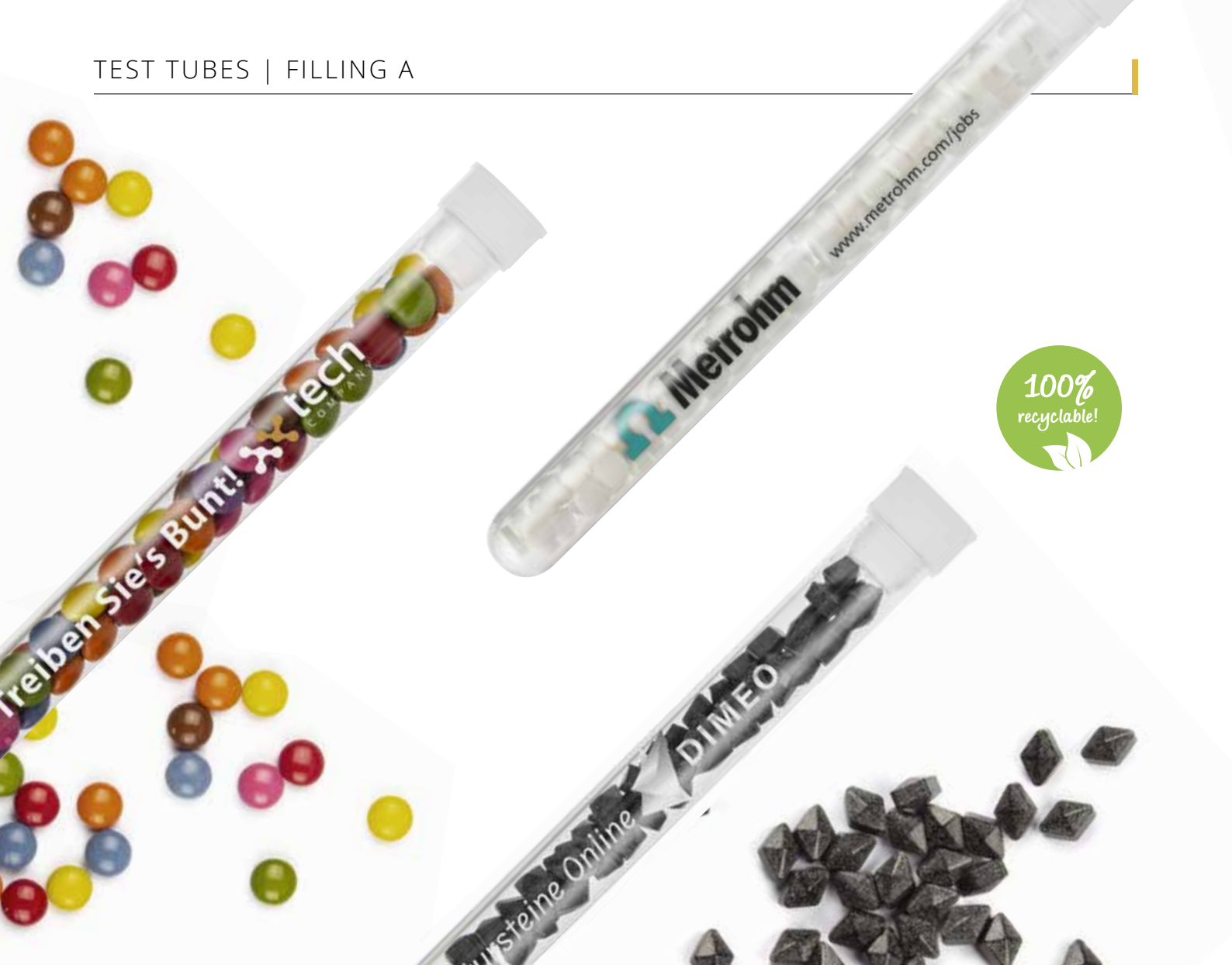
Noble and sustainable display made of oiled beech wood for 3 test tubes, an advertising-effective eye-catcher, not only in the kitchen. Branding on the display on request. Excl. Test tubes (see pages 16-18). Made-up sets on request.

| | | | | | |
|------------------------------|--|--|--|--|--|
| Product size: | 40 x 100 x 40 mm (h x b x t) | | | | |
| Finishing on display: | Engraving | | | | |
| Engraving area: | Ask for our print template | | | | |
| Packaging unit: | 50 pcs/carton | | | | |
| Delivery time: | approx. 15 – 20 working days after approval of the artwork | | | | |

| Pieces | 50 | 100 | 250 | 500 | 1.000 |
|--|------|------|------|------|-------|
| Wooden display for 3 test tubes | 7,25 | 7,15 | 7,05 | 6,90 | 6,50 |
| Engraving on wooden display/piece | 1,43 | 1,39 | 1,32 | 1,28 | 1,21 |
| Tool costs for Engraving 75,00 per motif | | | | | |



Multiple use
possible,
e.g. as an
elegant vase



Test tube made of plastic | Filling A

| | |
|--------------------|--|
| Capacity: | max. 16 g |
| Layered filling | |
| (up to 4 colours): | Prices on request |
| Shelf life: | approx. 12 - 24 months, if stored properly |
| Product size: | approx. 160 mm x 19 mm (H x Ø) |
| Type of printing: | Digital printing (CMYK) on label or pad printing |
| Print area: | Ask for our print template |
| Refinement: | Possibilities see pages 19 – 21 |
| Packaging unit: | 100 pcs./carton; 1.000 pcs. in the shipping box |
| Delivery time: | approx. 10 - 20 working days after approval of the artwork |

| Pieces | 250 | 500 | 1.000 | 3.000 | 5.000 |
|------------------------|------|------|-------|-------|-------|
| incl. 1-coloured print | - | 1,73 | 1,63 | 1,56 | 1,50 |
| Printing per colour | - | 0,25 | 0,21 | 0,18 | 0,16 |
| incl. 4c-label | 1,90 | 1,81 | 1,72 | 1,60 | 1,53 |

Pad printing: Preprint costs

Film and plate costs 45,00 per colour and motif

Set-up costs 29.50 per colour and motif

Manufacturer's notification 45,00 per type

Digital label: Preprint costs included!



VEGAN

Dextrose pastilles



Bitter liquorice lozenges



VEGAN

Sugarfree mint pastilles



Chocolate confetti



Chocolate lentils, black



Chocolate lentils, white



Chocolate lentils, yellow



Chocolate lentils, orange



Chocolate lentils, red



Chocolate lentils, pink



Chocolate lentils, mauve



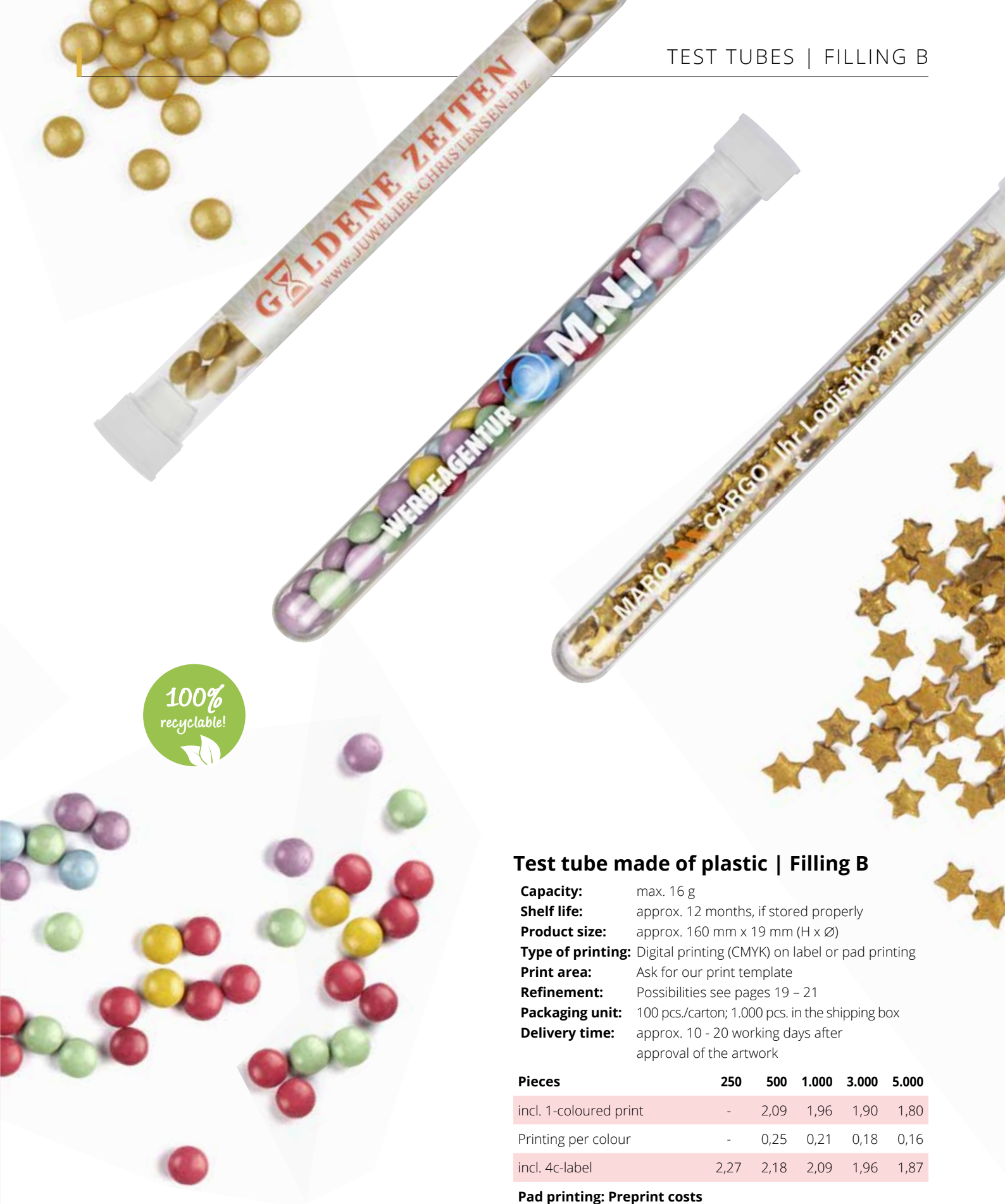
Chocolate lentils, green



Chocolate lentils, turquoise



Chocolate lentils, blue



100%
recyclable!

Test tube made of plastic | Filling B

| | |
|--------------------------|--|
| Capacity: | max. 16 g |
| Shelf life: | approx. 12 months, if stored properly |
| Product size: | approx. 160 mm x 19 mm (H x Ø) |
| Type of printing: | Digital printing (CMYK) on label or pad printing |
| Print area: | Ask for our print template |
| Refinement: | Possibilities see pages 19 – 21 |
| Packaging unit: | 100 pcs./carton; 1.000 pcs. in the shipping box |
| Delivery time: | approx. 10 - 20 working days after approval of the artwork |

| Pieces | 250 | 500 | 1.000 | 3.000 | 5.000 |
|------------------------|------|------|-------|-------|-------|
| incl. 1-coloured print | - | 2,09 | 1,96 | 1,90 | 1,80 |
| Printing per colour | - | 0,25 | 0,21 | 0,18 | 0,16 |
| incl. 4c-label | 2,27 | 2,18 | 2,09 | 1,96 | 1,87 |

Pad printing: Preprint costs

Film and plate costs 45,00 per colour and motif

Set-up costs 29,50 per colour and motif

Manufacturer's notification 45,00 per type

Digital label: Preprint costs included!



Chocolate
gold stars



Chocolate lentils,
gold



Chocolate lentils
VEGAN



For more
cooking fun!



Hot mulled
wine spice



Italian
herbs



Barbecue
seasoning



Christmas
spice



Pepper



Salad herbs



Sea salt



Test tube made of plastic | Filling C

| | |
|--------------------------|---|
| Capacity: | up to approx. 20 g spices at your option |
| Shelf life: | approx. 30 months if stored properly |
| Product size: | approx. 160 x 19 mm (h x ø) |
| Type of printing: | Digital printing (CMYK) on label or pad printing |
| Print area: | Ask for our print template |
| Refinement: | Possibilities see pages 19 – 21 |
| Packaging unit: | 100 pcs./carton 1.000 pcs. in the shipping box |
| Delivery time: | approx. 10 – 20 working days after approval of the artwork |

| Pieces | 250 | 500 | 1.000 | 3.000 | 5.000 |
|------------------------|------|------|-------|-------|-------|
| incl. 1-coloured print | - | 1,71 | 1,63 | 1,57 | 1,51 |
| Printing per colour | - | 0,25 | 0,21 | 0,18 | 0,16 |
| incl. 4c-label | 1,84 | 1,83 | 1,77 | 1,69 | 1,62 |

Pad printing: Preprint costs

Film and plate costs 45,00 per colour and motif

Set-up costs 29,50 per colour and motif

Manufacturer's notification 45,00 per type

Digital label: Preprint costs included!



Cover Card

Cardboard-tag with one holding device for test tubes, incl. packaging, excl. test tubes, prices for test tubes see pages 16 - 18. Small quantities on request.

Product size: approx. 190 x 100 x 15 mm (h x w x d)

Card: incl. 4/4-coloured print

Type of printing: Digital printing (CMYK) or offset printing (CMYK)

Print area: Ask for our print template

Packaging unit: 25 pcs./carton,
250 pcs. in the shipping box

Delivery time: approx. 15 – 20 working days after approval of the artwork

| Pieces | 500 | 1.000 | 3.000 | 5.000 | 10.000 |
|------------|------|-------|-------|-------|--------|
| Cover Card | 1,57 | 1,34 | 0,87 | 0,71 | 0,55 |

Preprint costs included!

*Small card
~ endless
possibilities!*



Duo Cushions rePET | for 2 test tubes

Cushion packaging made of rePET (up to 100 % PCR) for 2 test tubes incl. packaging, excl. test tubes. Finishing of the Duo Cushions by 4c-label or pad printing. Prices for test tubes see pages 16 - 18.

| | |
|--------------------------|--|
| Capacity: | two test tubes, see pages 16 - 18 |
| Product size: | 185 x 64 x 23 mm (h x w x d) |
| Type of printing: | Digital printing (CMYK) on label 80 x 53 mm (w x h) or Ø 40 mm or pad printing |
| Print area: | Ask for our print template |
| Packaging unit: | 20 pcs./carton 200 pcs. in the shipping box |
| Delivery time: | approx. 15 – 20 working days after approval of the artwork |

| Pieces | 125 | 250 | 500 | 1.500 | 2.500 |
|------------------------|------|------|------|-------|-------|
| incl. 4c-label | 0,88 | 0,84 | 0,81 | 0,76 | 0,72 |
| incl. 1-coloured print | - | 0,85 | 0,80 | 0,73 | 0,70 |
| Printing per colour | - | 0,27 | 0,24 | 0,20 | 0,19 |

Pad printing: Preprint costs

Film and plate costs 45,00 per colour and motif

Set-up costs 29,50 per colour and motif

Digital label: Preprint costs included!



Duo Cushions rePET | for 2 Towers

Cushion packaging made of rePET (up to 100 % PCR) for 2 Towers incl. packaging, excl. Towers. Finishing of the Duo Cushions by 4c-label or pad printing. Prices for Towers see pages 22 – 24.

| | |
|--------------------------|--|
| Capacity: | two Towers, see pages 22 – 24 |
| Product size: | 149 x 64 x 24 mm (h x w x d) |
| Type of printing: | Digital printing (CMYK) on label 80 x 53 mm (w x h) or Ø 40 mm or pad printing |
| Print area: | Ask for our print template |
| Packaging unit: | 25 pcs./carton 250 pcs. in the shipping box |
| Delivery time: | approx. 15 – 20 working days after approval of the artwork |

| Pieces | 135 | 270 | 540 | 1.080 | 2.700 |
|------------------------|------|------|------|-------|-------|
| Incl. 4c-label | 0,85 | 0,81 | 0,78 | 0,76 | 0,70 |
| Incl. 1-coloured print | - | 0,83 | 0,78 | 0,73 | 0,68 |
| Printing per colour | - | 0,27 | 0,24 | 0,21 | 0,19 |

Pad printing: Preprint costs

Film and plate costs 45,00 per colour and motif

Set-up costs 29,50 per colour and motif

Digital label: Preprint costs included!



Service Card
with test tube



Service Card with
10 g promotion bag



Cover Card Special | X-mas

Cardboard-tag with one holding device for test tubes, incl. packaging, excl. test tubes, prices for test tubes see pages 16 - 18. Small quantities (from 250 pieces) on request.

- Product size:** approx. 190 x 100 x 15 mm (h x w x d)
- Card:** incl. 4/4-coloured print
- Type of printing:** Digital printing (CMYK) or offset printing (CMYK)
- Print area:** Ask for our print template
- Packaging unit:** 25 pcs./carton
250 pcs. in the shipping box
- Delivery time:** approx. 15 – 20 working days
after approval of the artwork

| Pieces | 500 | 1.000 | 3.000 | 5.000 | 10.000 |
|--------------------------|------|-------|-------|-------|--------|
| Cover Card Special X-mas | 1,57 | 1,34 | 0,87 | 0,71 | 0,55 |

Preprint costs included!

Service Card

Cardboard-tag with one holding device for test tubes, incl. packaging, excl. test tubes, prices for test tubes see page 16 – 18. Small quantities (from 250 pieces) on request.

- Product size:** approx. 270 x 60 mm (h x w)
- Card:** incl. 4/4-coloured print
- Type of printing:** Digital printing (CMYK) or offset printing (CMYK)
- Print area:** Ask for our print template
- Packaging unit:** size dependent
- Delivery time:** approx. 15 – 20 working days
after approval of the artwork

| Pieces | 500 | 1.000 | 3.000 | 5.000 | 10.000 |
|--------------|------|-------|-------|-------|--------|
| Service Card | 1,25 | 1,01 | 0,82 | 0,69 | 0,55 |

Preprint costs included!



Also available with a silver cap

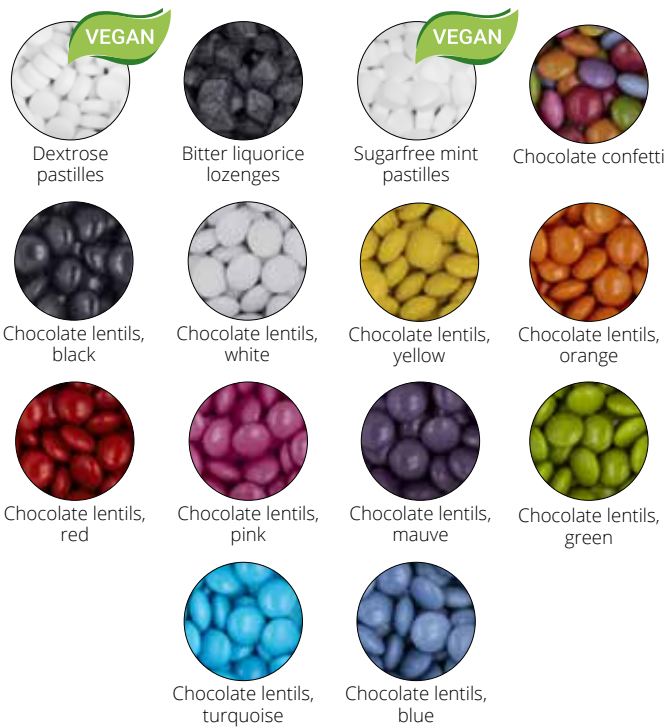
Candy Tower | Filling A

PET-tube with tamper-evident closure, available with top in white or silver.

- Capacity:** max. 20 g
Shelf life: approx. 12 – 24 months if stored properly
Product size: approx. 110 x 20 mm (h x ø)
Type of printing: Digital printing (CMYK) on label
Print area: Ask for our print template
Packaging unit: 90 pcs./carton
540 pcs. in the shipping box
Delivery time: approx. 10 – 20 working days after approval of the artwork

| Pieces | 270 | 540 | 1.080 | 3.240 | 5.400 |
|----------------|------|------|-------|-------|-------|
| incl. 4c-label | 1,92 | 1,89 | 1,87 | 1,84 | 1,79 |

Preprint costs included!





Chocolate gold stars



Chocolate lentils, gold



Chocolate lentils VEGAN

Candy Tower | Filling B

PET-tube with tamper-evident closure, available with top in white or silver.

- Capacity:** max. 20 g
- Shelf life:** approx. 12 months if stored properly
- Product size:** approx. 110 x 20 mm (h x ø)
- Type of printing:** Digital printing (CMYK) on label
- Print area:** Ask for our print template
- Packaging unit:** 90 pcs./carton
540 pcs. in the shipping box
- Delivery time:** approx. 10 – 20 working days after approval of the artwork

| Pieces | 270 | 540 | 1.080 | 3.240 | 5.400 |
|----------------|------|------|-------|-------|-------|
| incl. 4c-label | 2,53 | 2,51 | 2,49 | 2,48 | 2,46 |

Preprint costs included!

Fragrant Herbs & Spices



Hot mulled wine spice



Italian herbs



Pepper



Barbecue seasoning



Salad herbs



Sea salt



Christmas spice



Also available
with a silver cap

Spice Tower

PET-tube with tamper-evident closure, available with top in white or silver.

- Capacity:** up to approx. 30 g spices at your option
Shelf life: approx. 30 months if stored properly
Product size: approx. 110 x 20 mm (h x ø)
Type of printing: Digital printing (CMYK) on label
Print area: Ask for our print template
Packaging unit: 90 pcs./carton
540 pcs. in the shipping box
Delivery time: approx. 10 – 20 working days after approval of the artwork

| Pieces | 270 | 540 | 1.080 | 3.240 | 5.400 |
|----------------|------|------|-------|-------|-------|
| incl. 4c-label | 1,86 | 1,84 | 1,81 | 1,79 | 1,77 |

Preprint costs included!

NEW!



They have it all!

Spice notes

Parchment bag with various spices, incl. 4c-label.

| | | | | | |
|--------------------------|--|--|--|--|--|
| Capacity: | approx. 3 g, may vary depending on filling type | | | | |
| Shelf life: | approx. 24 – 36 months if stored properly | | | | |
| Product size: | approx. 65 x 75 x 5 mm (h x w x d) | | | | |
| Label size: | round: Ø 40 mm or oval: 49 x 32 mm | | | | |
| Type of printing: | Digital printing (CMYK) on label | | | | |
| Print area: | Ask for our print template | | | | |
| Packaging unit: | 250 pcs./carton, 1.500 pcs. in the shipping box | | | | |
| Delivery time: | approx. 15 – 20 working days after approval of the artwork | | | | |

| Pieces | 250 | 500 | 1.000 | 3.000 | 5.000 |
|----------------|------|------|-------|-------|-------|
| incl. 4c-label | 0,82 | 0,81 | 0,79 | 0,77 | 0,75 |

Preprint costs included!



Hot mulled wine spice



Italian herbs



Pepper



Barbecue seasoning



Salad herbs



Sea salt



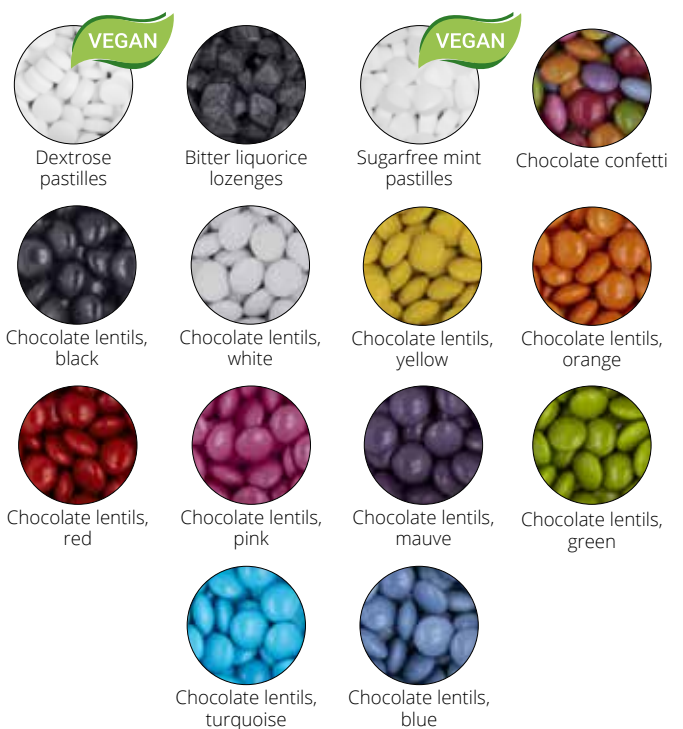
Sweet Cube | Filling A

Small square box with dispenser. Small quantities (from 250 pieces) on request.

| | |
|--------------------------|---|
| Capacity: | max. 20 g |
| Shelf life: | approx. 12 – 24 months if stored properly |
| Product size: | approx. 35 x 35 x 35 mm (h x w x d) |
| Box: | incl. 4/4-coloured print |
| Type of printing: | Digital printing (CMYK) |
| Print area: | Ask for our print template |
| Packaging unit: | 70 pcs./carton 700 pcs. in the shipping box |
| Delivery time: | approx. 15 – 20 working days after approval of the artwork |

| Pieces | 560 | 980 | 3.080 | 4.900 | 10.500 |
|------------|------|------|-------|-------|--------|
| Sweet Cube | 2,50 | 2,17 | 1,87 | 1,57 | 1,30 |

Preprint costs included!





Detail:
dispenser opening



Sweet Cube | Filling B

Small square box with dispenser. Small quantities (from 250 pieces) on request.

| | |
|--------------------------|---|
| Capacity: | max. 20 g |
| Shelf life: | approx. 12 months if stored properly |
| Product size: | approx. 35 x 35 x 35 mm (h x w x d) |
| Box: | incl. 4/4-coloured print |
| Type of printing: | Digital printing (CMYK) |
| Print area: | Ask for our print template |
| Packaging unit: | 70 pcs./carton 700 pcs. in the shipping box |
| Delivery time: | approx. 15 – 20 working days after approval of the artwork |

| Pieces | 560 | 980 | 3.080 | 4.900 | 10.500 |
|------------|------|------|-------|-------|--------|
| Sweet Cube | 2,96 | 2,58 | 2,20 | 1,88 | 1,58 |

Preprint costs included!



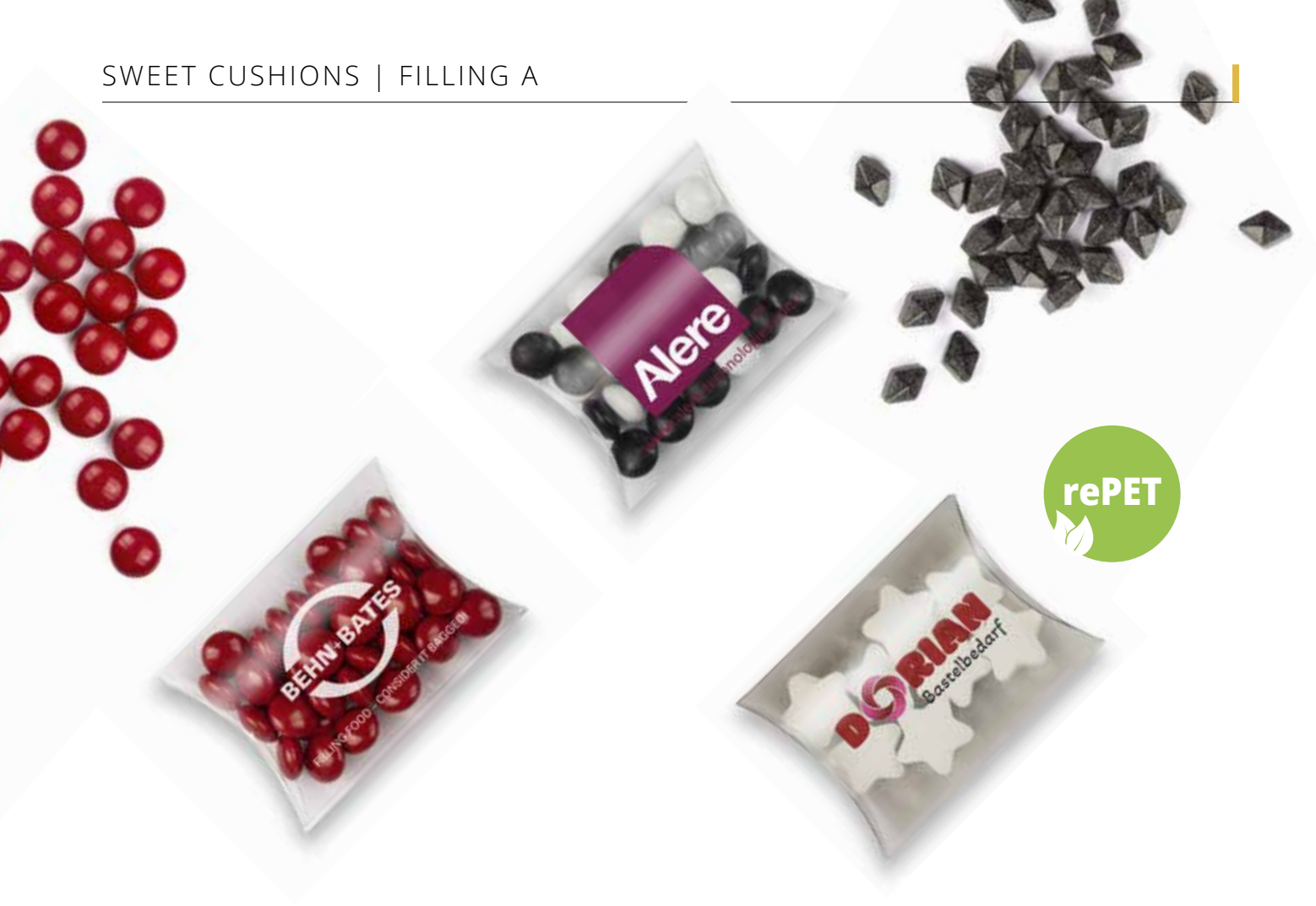
Chocolate
gold stars



Chocolate lentils,
gold



Chocolate lentils
VEGAN



Sweet Cushions | Filling A

PET-cushion-package, transparent frosted or transparent polished, PET ECO at extra charge.

| | |
|--------------------------|--|
| Capacity: | Filled to capacity, max. 15 g |
| Shelf life: | approx. 12 – 24 months if stored properly |
| Product size: | approx. 43 x 60 x 10 mm (h x w x d) |
| Type of printing: | Digital printing (CMYK) on label or pad printing |
| Print area: | Ask for our print template |
| Packaging unit: | 125 pcs./carton 1.250 pcs. in the shipping box |
| Delivery time: | approx. 15 – 20 working days after approval of the artwork |

| Pieces | 500 | 1.000 | 3.000 | 5.000 | 10.000 |
|-----------------------------------|------|-------|-------|-------|--------|
| incl. 1-coloured print | 1,23 | 1,13 | 1,07 | 1,01 | 0,94 |
| Printing per colour | 0,25 | 0,21 | 0,18 | 0,16 | 0,15 |
| incl. 4c-label (Ø 40 mm) | 1,22 | 1,16 | 1,13 | 1,10 | 1,04 |
| Additional costs | | | | | |
| Sweet Cushions ECO (PCR material) | 0,02 | 0,02 | 0,02 | 0,02 | 0,02 |

Pad printing: Preprint costs

Film and plate costs 45,00 per colour and motif

Set-up costs 29,50 per colour and motif

Manufacturer's notification 45,00 per type

Digital label: Preprint costs included!





*Inspiration comes
from the stars*



Sweet Cushions | Filling B

PET-cushion-package, transparent frosted or transparent polished, PET ECO at extra charge.

- Capacity:** Filled to capacity, max. 15 g
Shelf life: approx. 12 months if stored properly
Product size: approx. 43 x 60 x 10 mm (h x w x d)
Type of printing: Digital printing (CMYK) on label or pad printing
Print area: Ask for our print template
Packaging unit: 125 pcs./carton
 1.250 pcs. in the shipping box
Delivery time: approx. 15 – 20 working days after approval of the artwork

| Pieces | 500 | 1.000 | 3.000 | 5.000 | 10.000 |
|-----------------------------------|------|-------|-------|-------|--------|
| incl. 1-coloured print | 1,48 | 1,38 | 1,31 | 1,26 | 1,18 |
| Printing per colour | 0,25 | 0,21 | 0,18 | 0,16 | 0,15 |
| incl. 4c-label (Ø 40 mm) | 1,46 | 1,42 | 1,39 | 1,36 | 1,28 |
| Additional costs | | | | | |
| Sweet Cushions ECO (PCR material) | 0,02 | 0,02 | 0,02 | 0,02 | 0,02 |

Pad printing: Preprint costs

Film and plate costs 45,00 per colour and motif

Set-up costs 29,50 per colour and motif

Manufacturer's notification 45,00 per type

Digital label: Preprint costs included!



Chocolate
gold stars



Chocolate lentils,
gold



Chocolate lentils
VEGAN

High-performance athlete!



i They pack a powerful punch! These little rolls really do fit in any pocket. The delicious dextrose pastilles not only provide energy, but also taste so fresh – thanks to real peppermint oil! Also available with fruit flavour.

Dextrose rolls **VEGAN**

Handy rolls with 9 dextrose pastilles „mint“ (with peppermint oil) or „fruit“, incl. 4c-printed seal.

- Capacity:** approx. 5,2 g / 9 dextrose pastilles
- Shelf life:** approx. 18 – 24 months if stored properly,
- Product size:** approx. 50 x 12 mm (h x ø)
- Seal:** incl. 4/0-coloured print
- Type of printing:** Offset printing (CMYK)
- Print area:** Ask for our print template
- Packaging unit:** 500 pcs / polybag
2.500 pcs in the shipping box
- Delivery time:** approx. 20 working days
after approval of the artwork

| Pieces | 2.500 | 5.000 | 10.000 | 20.000 | 30.000 | 40.000 | 50.000 |
|---------|-------|-------|--------|--------|--------|--------|--------|
| „Mint“ | 18,70 | 15,20 | 13,50 | 12,00 | 10,80 | 10,10 | 9,50 |
| „Fruit“ | 18,70 | 15,20 | 13,50 | 12,00 | 10,80 | 10,10 | 9,50 |

Preprint costs included!

*Tasty energy
for your
brain!*



NEW!

Bottle
made of
sugar
cane!

„Brain Fuel“ Canister Bottle with Dextrose rolls

VEGAN

Black plastic bottle – made of sugar cane – tamper-evident closure,
incl. two 4c-labels, filled with delicious Dextrose rolls „mint“ or „fruit“
incl. 4c-printed seal.

| | | | | | |
|--|---|--|--|--|--|
| Capacity: | 20 Dextrose rolls (9 pastilles per Dextrose roll) | | | | |
| Shelf life: | approx. 18 – 24 months if stored properly | | | | |
| Size canister bottle: | approx. 150 x 65 x 38 mm (h x w x d) | | | | |
| Type of printing canister bottle: | Digital printing (CMYK) on label | | | | |
| Type of printing seal: | Offset printing (CMYK) | | | | |
| Print area: | Ask for our print template | | | | |
| Packaging unit: | 30 pcs./carton | | | | |
| Delivery time: | approx. 25 – 30 working days after approval of the artwork | | | | |

| Pieces | 120 | 300 | 510 | 1.020 | 2.040 |
|--------------------|------|------|------|-------|-------|
| incl. 4c-finishing | 6,95 | 6,25 | 5,95 | 5,35 | 4,75 |

Preprint costs included!





100%
recyclable!

Fresh Taste Times Four!

i It tastes better together – whether at an evening barbecue with friends or on the next company event. Why not present your beer with your advertising message in a pack of four – the effect is not only doubled, but quadrupled!

„My Beer“ | 4 bottle carrier

Practical 4 bottle carrier for 4 x 0,33 l bottles „My beer“ made of cardboard, outside brown (plain), inside white. Printing on request.

| | | | | |
|------------------------|--|--|--|--|
| Product: | bottle carrier for 4 x 0,33 l bottles, plain | | | |
| Material: | Cardboard 375g/qm | | | |
| Product size: | 250 x 238 mm (h x w) | | | |
| Carrier: | plain, printing on request | | | |
| Print area: | Ask for our print template | | | |
| Packaging unit: | the carrier is supplied flat with the beer | | | |
| Delivery time: | plain - short term ex stock, analogous to beer | | | |

| Pieces | 24 | 72 | 144 | 324 |
|------------------|------|------|------|------|
| 4 bottle carrier | 1,65 | 1,54 | 1,52 | 1,50 |



*For the best
business relations!*

„My beer“ | Nordic Pilsner beer

Classic longneck bottle in brown, 0,33 l, with Nordic Pilsner beer, incl. 4c-labels. Shandy beer and non-alcoholic beer available on request (starting at one pallet = 1.296 bottles).

| | |
|--------------------------|--|
| Content: | 0,33 l, alcohol content 4.8% vol. |
| Shelf life: | approx. 6 – 12 months (The beer has to be stored in a dry and cool place without direct sunlight) |
| Product size: | approx. 24 cm x 5,9 cm (h x ø) |
| Type of printing: | Digital printing (CMYK) |
| Print area: | Ask for our print template |
| Packaging unit: | 24 pcs/carton. Shipping only per pallet |
| Delivery time: | approx. 15-20 working days after approval of the artwork |

| Pieces | 96 | 288 | 576 | 1.296 |
|----------------------|------|------|------|-------|
| Beer incl. 4c-labels | 2,88 | 2,78 | 2,71 | 2,01 |

Preprint costs included!





Dextrose Strawberry in transparent Flow-Pack



Energy Bag VEGAN

Box in shape of a „school cone“, filling: Dextrose Strawberry. Small quantities (from 250 pieces) on request.

| | |
|--------------------------|--|
| Capacity: | 15 pcs. Dextrose Strawberry |
| Shelf life: | approx. 18 – 24 months if stored properly |
| Product size: | approx. 185 x 60 x 60 mm (h x w x d) |
| Box: | incl. 4/0-coloured print |
| Type of printing: | Digital printing (CMYK) |
| Print area: | Ask for our print template |
| Packaging unit: | 100 pcs./carton, max. 24 cartons per pallet (Height approx. 195 cm incl. pallet) |
| Delivery time: | approx. 15 – 20 working days after approval of the artwork |

| Pieces | 500 | 1.000 | 3.000 | 5.000 |
|------------|------|-------|-------|-------|
| Energy Bag | 2,12 | 1,87 | 1,70 | 1,55 |

Preprint costs included!

Sweet Goal Box

Box in a soccer goal design, shrink wrapped. Filling: Chewing gum balls. Small quantities (from 250 pieces) on request

| | |
|--------------------------|--|
| Capacity: | 10 pcs. Chewing gum balls |
| Shelf life: | approx. 18 – 24 months if stored properly |
| Product size: | approx. 60 x 90 x 20 mm (h x w x d) |
| Box: | incl. 4/0-coloured print |
| Type of printing: | Digital printing (CMYK) |
| Print area: | Ask for our print template |
| Packaging unit: | 36 pcs./carton 360 pcs. in the shipping box |
| Delivery time: | approx. 15 – 20 working days after approval of the artwork |

| Pieces | 540 | 1.080 | 3.240 | 5.040 |
|----------------|------|-------|-------|-------|
| Sweet Goal Box | 1,70 | 1,47 | 1,28 | 1,18 |

Preprint costs included!



Popcorn-Box VEGAN

Microwave popcorn, sweet or salty, small quantities (from 250 pieces) on request.

| | |
|--------------------------|--|
| Capacity: | approx. 100 g |
| Shelf life: | approx. 12 months if stored properly |
| Product size: | approx. 155 x 105 x 15 mm (h x w x d) |
| Box: | incl. 4/0-coloured print |
| Type of printing: | Digital printing (CMYK) |
| Print area: | Ask for our print template |
| Packaging unit: | 17 pcs./carton, 170 pcs. in the shipping box |
| Delivery time: | approx. 15 – 20 working days after approval of the artwork |

| Pieces | 510 | 1.020 | 3.060 | 5.100 |
|-------------|------|-------|-------|-------|
| Popcorn-Box | 3,17 | 2,93 | 2,74 | 2,59 |

Preprint costs included!

Popcorn to go VEGAN

Popcorn in neutral, transparent bag, small quantities (from 250 pieces) on request.

| | |
|--------------------------|--|
| Capacity: | approx. 40 g |
| Shelf life: | approx. 6 months if stored properly |
| Product size: | approx. 170 x 117 x 40 mm (h x w x d) |
| Box: | incl. 4/0-coloured print |
| Type of printing: | Digital printing (CMYK) |
| Print area: | Ask for our print template |
| Packaging unit: | 45 pcs./carton, max. 24 cartons per pallet (Height approx. 195 cm incl. pallet) |
| Delivery time: | approx. 15 – 20 working days after approval of the artwork |

| Pieces | 540 | 1.080 | 3.015 | 5.100 |
|---------------|------|-------|-------|-------|
| Popcorn to go | 2,84 | 2,43 | 2,02 | 1,83 |

Preprint costs included!



*Chocolate & hazelnuts ~
a match made in heaven!*



Nougat Coin

High-quality chocolate coin filled with melting nougat and hazelnut crisps, in golden stanniol paper, incl. 4c-label.

| | |
|--------------------------|--|
| Capacity: | 1 chocolate coin, approx. 20 g |
| Shelf life: | approx. 6 months if stored properly |
| Product size: | approx. 7 mm x 55 mm (h x ø) |
| Label: | incl. 4-coloured print |
| Label size: | Ø 40 mm |
| Type of printing: | Digital printing (CMYK) |
| Print area: | Ask for our print template |
| Packaging unit: | 225 pcs /carton |
| Delivery time: | approx. 15 – 20 working days after approval of the artwork |

| Pieces | 200 | 600 | 1.200 | 2.400 | 4.800 |
|-----------------|------|------|-------|-------|-------|
| incl. 4c-labels | 1,01 | 0,99 | 0,97 | 0,94 | 0,90 |

Preprint costs included!



Chocolate Blister in Slipcase

Blister, filled with 24 chocolate lentils, in an individually printed slipcase. Chocolate lentils may splinter on filling into blister. Small quantities (from 250 pieces) on request.

| | |
|--------------------------|--|
| Capacity: | 24 chocolate lentils |
| Shelf life: | approx. 12 months if stored properly |
| Product size: | approx. 95 x 70 x 5 mm (h x w x d) |
| Blister: | without print |
| Slipcase: | incl. 4/0-coloured print |
| Type of printing: | Digital printing (CMYK) |
| Print area: | Ask for our print template |
| Packaging unit: | 90 pcs./carton 900 pcs. in the shipping box |
| Delivery time: | approx. 15 – 20 working days after approval of the artwork |

| Pieces | 540 | 1.080 | 3.240 | 5.400 |
|---------------------------------|------|-------|-------|-------|
| Chocolate Blister in a slipcase | 1,82 | 1,56 | 1,37 | 1,29 |

Preprint costs included!

Chocolate Blister in Cover Card

Blister, filled with 24 chocolate lentils, in an individually printed Cover Card. Chocolate lentils may splinter on filling into blister. Small quantities (from 250 pieces) on request.

| | |
|--------------------------|--|
| Capacity: | 24 chocolate lentils |
| Shelf life: | approx. 12 months if stored properly |
| Product size: | approx. 140 x 90 x 8 mm (h x w x d) |
| Blister: | without print |
| Cover Card: | incl. 4/4-coloured print |
| Type of printing: | Digital printing (CMYK) |
| Print area: | Ask for our print template |
| Packaging unit: | 50 pcs./carton 500 pcs. in the shipping box |
| Delivery time: | approx. 15 – 20 working days after approval of the artwork |

| Pieces | 500 | 1.000 | 3.000 | 5.000 |
|---------------------------------|------|-------|-------|-------|
| Chocolate Blister in Cover Card | 1,94 | 1,69 | 1,44 | 1,27 |

Preprint costs included!

i We offer many different designs for many occasions with a filling that fits to the message. Ask for our special offers or for promotion bags with your own design and a filling of your choice.

*The right giveaway
for every occasion!*

Foil
100%
recyclable!

Fröhliche
Ostern!

I mog
di!

EINE SCHÖNE
SOMMERZEIT!

VEGAN

Creativity ~ Plant-based

i Our special forms in fruit gums are also available in vegan!



Customised forms fruit gum | Promotion bag

In 10 g or 20 g promotion bags, incl. 4c-print.

Customised forms, now also vegan, minimum quantity 700 kg:

Fruit gum (Colour and taste free on arrangement)

Sugarfree fruit gum or sugarfree liquorice on request

| | | |
|--------------------------|--|--|
| Capacity: | 10 g or 20 g | |
| Shelf life: | approx. 12 months if stored properly | |
| Product size: | approx. 80 x 90 mm (h x w) or. approx. 100 x 100 mm (h x w) | |
| Blank foil: | white or transparent | |
| Type of printing: | Digital printing | |
| Print area: | Ask for our print template | |
| Packaging unit: | 10 g bag = 1.000 pcs./carton 20 g bag = 500 pcs./carton | |
| Delivery time: | After arrangement | |

| Pieces | 70.000 | 100.000 |
|-----------------------------------|--------|---------|
| 10 g promotion bag incl. 4c-print | 25,20 | 24,80 |
| Pieces | 35.000 | 70.000 |
| 20 g promotion bag incl. 4c-print | 38,90 | 32,80 |

Preprint costs

Tool costs 1935,00 per tool

3D-model on request

Preprint costs included!

Packaging ideas for our products

100%
recyclable!



Duo-Box for Test Tubes



Two test tubes,
one packaging



Promo-Card Tower





**Cardboard display
for 3 Test Tubes**



**Promo-Card
Sweet Cushion**



NOTES ON PRINT

Important notices

We use pad / screen printing, hot stamp filmprinting, flexo filmprinting or digital printing according to size of order. Pre-production costs are charged at cost price, a sample print on enquiry. For orders below the minimum quantity, there will be a surcharge after consultation. Prices in Euro per item. The prices include a single-colour printout of the ingredient on the reverse side as well as the sell-by date (which is required by law). All prices are ex works, including packaging, net of Value Added Tax. Delivery and packing charges will be billed separately. All previous pricelists are hereby void.

Notes on print

• **Pad and screen printing:** Differences in print and colour may occur. The double printing of individual colours may be necessary for full-surface motifs. These count as additional colours. We recommend a white background for the motif to ensure a true colour imprint. The white background is charged as an additional colour.

• **Digitalprinting:** The colours are made up of 4-c-euro scale together, special colours according to HRS, RAL or Pantone can be achieved only approximately. A white deposit of pressure motifs for printing of boxes is not possible, next to silver-coloured boxes, the colours are not opaque, and often do not achieve the desired hue, but the brightness of the silver tin has a high-quality effect. For flat designs can a little banding occur. Print motives that have advertising space beyond the edges are blurred. Slight scratches and bumps caused material can occur.

• **Digitalprinting / promotion bags:** Differences in print and/or colour are possible. In whole surface printing rubbing of the colour and a visible join of the printing block may occur.

• **Offsetprinting:** We retain the right to deliver colours which vary very slightly from the colours ordered. A print of special colours according to HKS and Pantone is possible.

GOOD TO KNOW

Transmission of digital printing data

Applications for Apple Macintosh:
Photoshop · Illustrator · InDesign

Print colours should be given in HKS or Pantone numbers.

Further important notices

We use pad / screen printing, flexo filmprinting, digital printing or offset printing according to product and size of order. Pre-production costs are charged at cost price, a sample print on enquiry. For orders below the minimum quantity, there will be a surcharge after consultation. Prices in Euro per item. The prices include normally a single-colour printout of the ingredients on the reverse side. All prices are ex works, including packaging, net of Value Added Tax. Delivery and packing charges will be billed separately. All previous pricelists are hereby void.

Our printing techniques are

Screen printing: max. 24 lpi

Pad printing: max. 48 lpi

Flexo film printing: 34 - 48 lpi

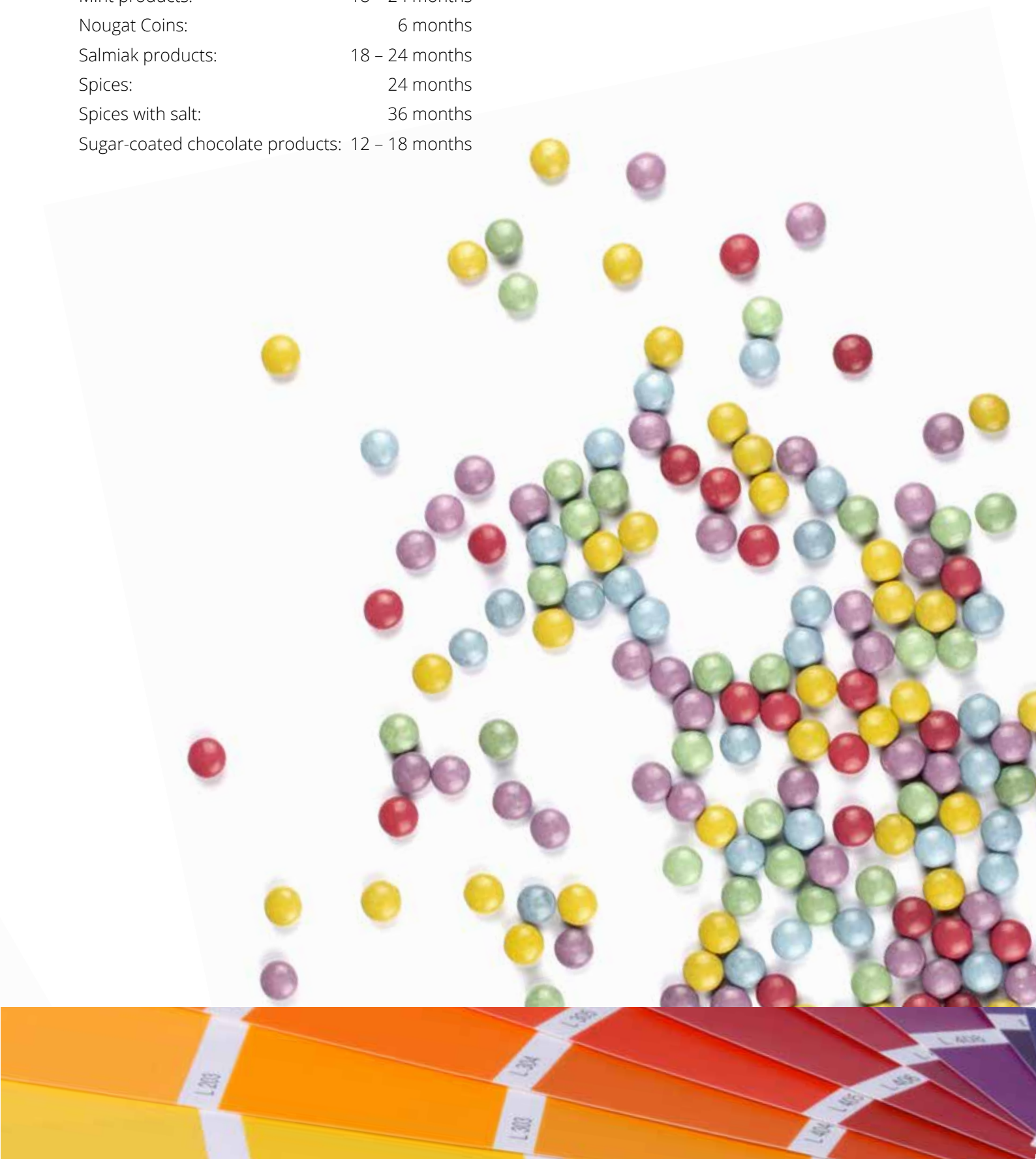
Possible file formats: tiff-, jpeg-, eps-, pdf-files



SHELF LIFE

Shelf life of sorts if stored properly:

| | |
|----------------------------------|----------------|
| Beer: | 6 – 12 months |
| Dextrose products: | 18 – 24 months |
| Fruitgum products: | 12 months |
| Mint products: | 18 – 24 months |
| Nougat Coins: | 6 months |
| Salmiak products: | 18 – 24 months |
| Spices: | 24 months |
| Spices with salt: | 36 months |
| Sugar-coated chocolate products: | 12 – 18 months |





**A „must see“:
OUR NEW COSMETICS
CATALOGUE!**